

INSTALLATION INSTRUCTIONS

REALTRUCK BACKRACK KIT #30107, 30107TB, 30107TB31
1994-2001RAM

READ THIS NOW!

Your truck should look like the one shown. If you think you are missing any parts, think that this part number is not for your truck or have any installation question, call our customer service department at toll free:

888-588-6101 or locally 800-265-8137.

Other ways to reach RealTruck Backrack:

email: info@backrack.ca

Support@backrack.com



The RealTruck Backrack is secured to your truck with a pair of "Stake Pocket Bolts" specifically designed for your make and model of truck. These bolts mount into each of the two front stake pockets. The RealTruck Backrack assembly sits on the bed rails of your truck and is secured to these Stake Pocket Bolts. If your truck has a BEDLINER we suggest you remove it to install the Stake Pocket Bolts

PARTS LIST FOR KIT #30107

| PART | DESCRIPTION | QTY |
|-------------------------|------------------------------|-----|
| RP507S | Rail Plate | 2 |
| RMB507D | Rail Mount Bracket Driver | 1 |
| RMB507P | Rail Mount Bracket Passenger | 1 |
| HARDWARE BAG507A | | |
| FYZ001 | 3/8-16 Hex Nut | 4 |
| FYZ002 | 3/8 Lockwasher | 4 |
| B32714 | Sealed Bag Fasteners | 1 |
| FYZ016 | 5/8-11 Hex Nut Gr 2 | 2 |
| FYZ017 | 5/8 Lockwasher | 2 |
| FYZ018 | 5/8 Sae Flat Washer | 2 |
| SF017 | Foam Pad | 2 |
| HARDWARE BAG507B | | |
| SBY507S | Stake Pocket Bolt | 2 |

PARTS LIST FOR KIT #30107TB, 30107TB31

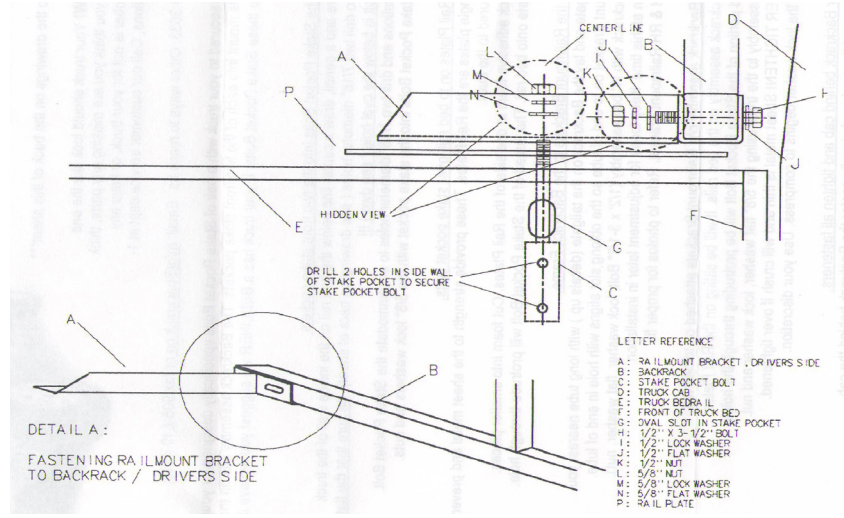
| PART | DESCRIPTION | QTY |
|-------------------------|-------------------------------|-----|
| TB503D | Toolbox Bracket Driver | 1 |
| TB503P | Toolbox Bracket Passenger | 1 |
| OR | | |
| TB901D | 31" Toolbox Bracket Driver | 1 |
| TB901P | 31" Toolbox Bracket Passenger | 1 |
| HARDWARE BAG507A | | |
| FYZ001 | 3/8-16 Hex Nut | 4 |
| FYZ002 | 3/8 Lockwasher | 4 |
| B32714 | Sealed Bag Fasteners | 1 |
| FYZ016 | 5/8-11 Hex Nut Gr 2 | 2 |
| FYZ017 | 5/8 Lockwasher | 2 |
| FYZ018 | 5/8 Sae Flat Washer | 2 |
| SF017 | Foam Pad | 2 |
| HARDWARE BAG507B | | |
| SBY507S | Stake Pocket Bolt | 2 |
| FYZ012 | 1/2" Flat Washer Large | 2 |

FOR MORE INFORMATION SCAN HERE!



1 Install the Stake Pocket Bolts into the two front stake pockets

1. Using a square and a pencil, draw a center line below the bed rail on the inside wall of the truck bed as a guide to drill two 7/16" diameter holes (see drawing on back of sheet). Be sure that the flat steel portion of the Stake Pocket Bolt is below the oval hole (see drawing)
2. Mark hole locations and drill two 7/16" diameter holes to accommodate the Stake Pocket Bolt.
3. Secure the Stake Pocket Bolts into the stake pocket with the 3/8" lock washers and nuts.



2 Place Railplates on bed rail, over stake pocket bolts.

1. Apply the black adhesive foam to one side of the Rail Plates. Cut foam into smaller pieces.
2. Place Rail Plate onto bed rail. The thread of the Stake Pocket Bolt will protrude through hole.

3 Attach the Railmount Brackets to the RealTruck Backrack Frame

1. Drop the tailgate and lay the RealTruck Backrack on the tailgate (decals up) with long tube nearest you.
2. Slide Railmount Bracket on to end of tube so the oblong slot aligns with hole in end of tube.
3. Secure to RealTruck Backrack with W' bolt assembly (1/2" x 3-1/2" Bolt, lock washer, flat washer, nut).
4. Do not tighten at this time. Keep loose for adjustment later in installation.
5. There is a LH & RH Railmount Bracket. Refer to photos for proper fit.

4 Place RealTruck Backrack assembly with Railmount Brackets attached on to bed rail

1. Place the RealTruck Backrack assembly on the bed rails. It will be sitting on the Rail Plates.
2. The threaded portion of the Stake Pocket Bolt will be protruding through the holes.
3. Secure the assembly to the truck using the 5/8" flat washer, lock washer and nut.
4. DO NOT OVERTIGHTEN! Sheet metal is thin and will crush if over tightened.
5. Tighten until the lock washer begins to compress. Use your discretion.

5 Center RealTruck Backrack behind cab and tighten all fasteners

1. Stand at the rear of the truck and visually center the RealTruck Backrack behind the cab.
2. Finish the installation by tightening all nuts and bolts.
3. DO NOT OVERTIGHTEN THE STAKE POCKET BOLTS.
4. The W' bolt assembly should be tightened as firmly as possible with an extension handle.