

Part # 10313
1996-03 DODGE DAKOTA
1997-03 TOYOTA TACOMA

Please refer to drawings on the back of this sheet

READ THIS NOW ! If you think you are missing any parts, think that this part number is not for your truck, or have any installation questions, Call our customer service dept at 888-588-6101 or locally 800-265-8137. Other ways to reach RealTruck Backrack: email: info@backrack.ca or Support@backrack.com

The RealTruck Backrack is secured to the bed rails of your truck with four Railmount Bolts. Because your truck has no stake pockets you will have to drill two 7/16" diameter holes through the bed rail on each side of the truck. If your truck has an over the rail bed liner you must remove it from the truck. Read the section at the bottom of the page if your truck has a over the rail bed liner.

STEP 1: Attach the Railmount Brackets to the RealTruck Backrack Frame.

- 1) Drop the tailgate and lay the RealTruck Backrack on the tailgate (decals up) with long tube nearest you.
- 2) Slide Railmount Bracket on to end of tube so the oblong slot aligns with hole in end of tube.
- 3) Secure to RealTruck Backrack with 1/2" bolt assembly (1/2" x 3-1/2" Bolt, lock washer, flat washer, nut).
- 4) Apply adhesive foam to underside of Railmount Brackets. Cut into smaller pieces in needed.
- 5) Do not tighten bolts at this time. Keep loose for adjustment later in installation.
- 6) There is a LH & RH Railmount Bracket.

STEP 2: Place RealTruck Backrack assembly behind truck cab and mark layout holes for drilling.

- 1) Position RealTruck Backrack behind cab with Railmount Brackets sitting on bed rails.
- 2) Holes must be drilled only where you have access to the under side of bed rail for bolts.
- 3) Once you have found positions where you can drill a hole and insert the Railmount Bolt up through the bed rail without interference, you can mark the holes with a marker.
- 4) Remove the RealTruck Backrack and drill 7/16" diameter holes through the bed rail.

STEP 3: Fasten the RealTruck Backrack c/w Railmount Brackets attached to the bed rails.

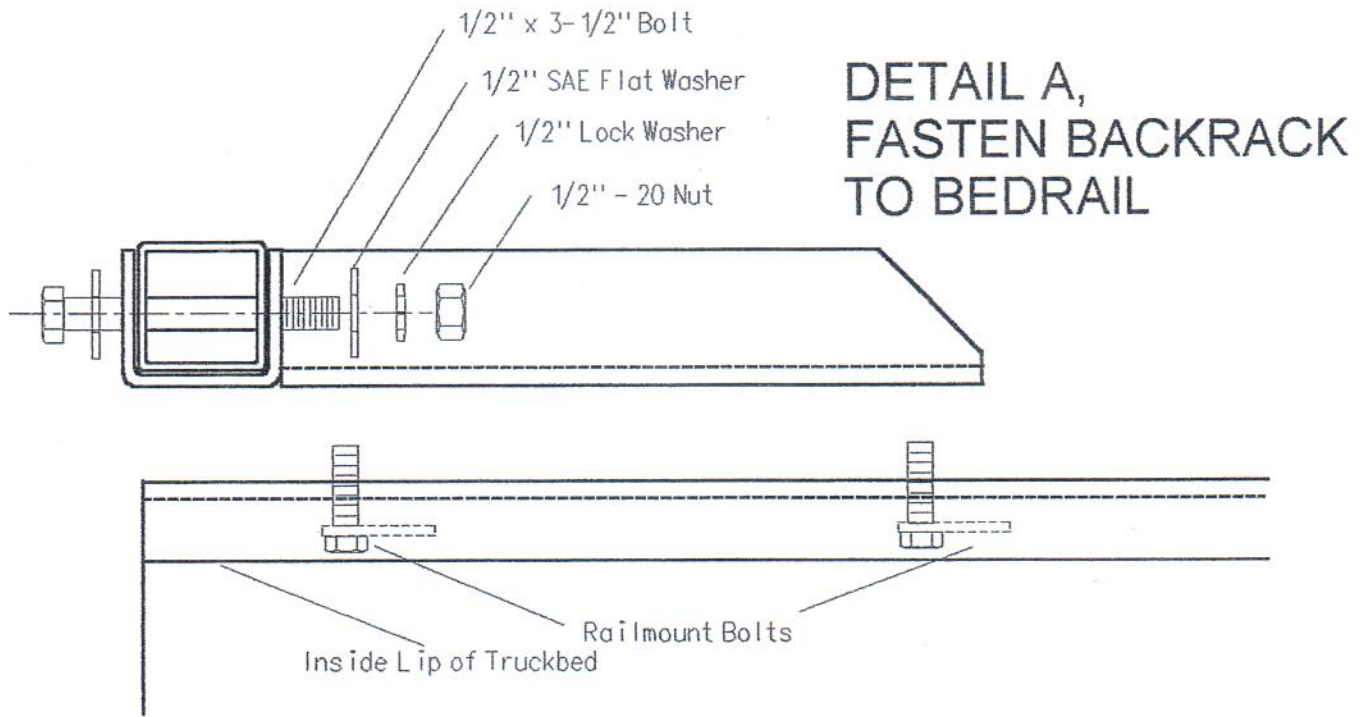
- 1) Place RealTruck Backrack assembly on to the bed rails, over the holes you drilled through the rails.
- 2) Insert Railmount Bolts up through bedrail and Railmount Brackets from under bed rail.
- 3) Secure to bed rail with 3/8" flat washer, lock washer, and nut.
- 4) Tighten all 3/8" fasteners until lock washer compresses. The rectangle tab welded to the bolt will prevent the bolt from spinning while tightening.

STEP 4: Center RealTruck Backrack behind cab and tighten all fasteners.

- 1) Stand at the rear of the truck and visually center the RealTruck Backrack behind the cab.
- 2) Finish the installation by tightening all nuts and bolts ..
- 3) The 1/2" bolt assembly should be tightened as firmly as possible with an extension handle.

IF YOUR TRUCK HAS AN OVER THE RAIL BEDLINER.

Over the rail bedliners make this installation more difficult. We recommend removing the bedliner and installing the RealTruck Backrack first then, replace the bedliner. Once you have drilled the holes through the bed rails (Step 2) take a marker and mark the approximate location of the holes (distance from the cab) on the outer panel of the truck bed so you can see them when the bedliner is installed. Replace the bedliner and mark the hole locations on the bed liner. The idea is to have the holes in the bedliner line up with the holes in the bed rail. Remove the liner from the truck and drill a large hole (over 5/8") through the bedliner to allow the Railmount Bolts to protrude through without interference. TECH TIP: Insert the Railmount Bolts up through the holes in the bed rail. To keep them from falling down into the truck bed wrap an elastic band around both bolts to tie them together. Now re-install your bed liner and fasten RealTruck Backrack to the truck as described in Step 3. The RealTruck Backrack will be sitting on top of the bedliner.



**VIEW OF PASSENGER SIDE, BEDRAIL
 FROM REAR OF TRUCKBED (Below)**

